

## Registration

### Registration Fee

	until 04/10/09	after 04/10/09
EARSeL-members	EUR 250	EUR 300
Non-members	EUR 300	EUR 350
Student-members	EUR 120	EUR 150
Student non-members	EUR 150	EUR 180

### Fees include

- Symposium materials
- Abstract book
- Coffee, tea, snacks
- Symposium dinner

There will be no conference proceedings. Participants are encouraged to submit their manuscripts directly to the EARSeL eProceedings ([www.eproceedings.org](http://www.eproceedings.org)).

## Important Deadlines

Submission of abstracts	31 Jul. 2009
Notification of acceptance	31 Jul. 2009
Preliminary programme	31 Jul. 2009
Reduced registration fee until	04 Oct. 2009
Full registration fee from	04 Oct. 2009

**Extended to  
08 Jul. 2009**

All participants selected for oral presentation are requested to register by 04 Oct. 2009 in order to confirm their attendance of the workshop.

## Scientific Committee

Matthias Braun, Bonn Univ. (GER)  
George Büttner, FÖMI (HUN)  
Mario Caetano, Instituto Geográfico Português (POR)  
Jan Clevers, Wageningen Univ. (NED)  
Andreas Littkopf, ETC/LUSI, Univ. Barcelona (ESP)  
André Marcal, Porto Univ. (POR)  
Patrick Hostert, HU Berlin (GER)  
Steffen Kuntz, Infoterra (GER)  
Gunter Menz, Bonn Univ. (GER)  
Chris Steenmans, EEA (EU)

## Local Organiser

Center for Remote Sensing of Land Surfaces  
*Zentrum für Fernerkundung der Landoberfläche (ZFL)*  
Rheinische Friedrich-Wilhelms-Universität Bonn  
c/o Dr. Matthias Braun, Ellen Götz  
Walter-Flex-Str. 3  
D-53113 Bonn, Germany  
e-mail: [zfl@uni-bonn.de](mailto:zfl@uni-bonn.de)  
<http://www.zfl.uni-bonn.de>

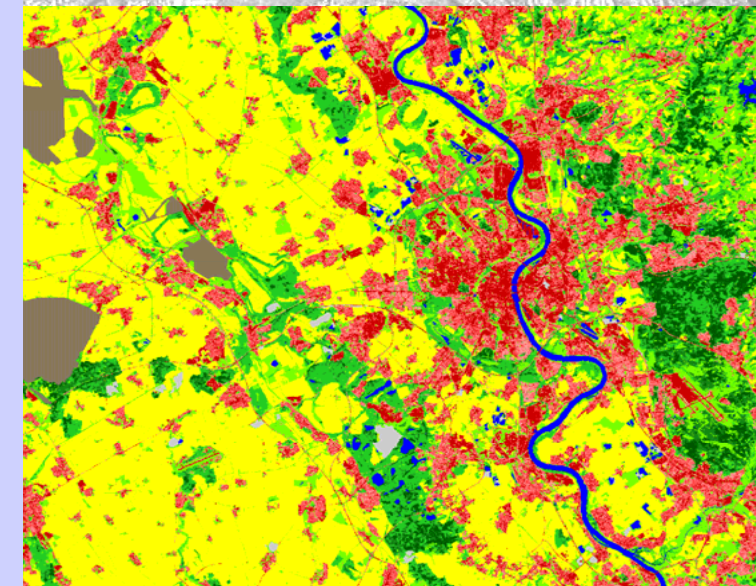
in cooperation with the Universitätsclub Bonn



University main building



View over the city



Organised by:  
the Center for Remote Sensing of Land Surfaces  
of the University of Bonn  
in cooperation with the Universitätsclub Bonn



# Call for papers!

## Abstract Submission

The EARSeL Conference Management System will be used for abstract submission and registration.

Both, oral and poster presentations should similarly present state-of-the-art research and will be reviewed according to the same standards.

**Abstracts deadline: 24 June 2009**

**Submit to:** [www.conferences.earsel.org](http://www.conferences.earsel.org)

## Online information

[www.earsel.org](http://www.earsel.org), [www.zfl.uni-bonn.de](http://www.zfl.uni-bonn.de)

# Topics

Presentations may cover the following remote sensing topics in relation to the workshop focus:

- Land use and land cover (LULC) mapping
- Land use cover change (LUCC)
- Land degradation & desertification
- Ecological aspects of LULC
- Integration of LULC products into modelling
- New methods and algorithms
- Applications with new sensor systems
- Multi-sensor approaches
- Accuracy, quality and scale aspects
- Pre-processing requirements & standards
- INSPIRE compliance

# Venue

A history of more than 2000 years has given Bonn most varied facets. The former German capital still is of international flair and many high-ranking national and international organisations are located here.

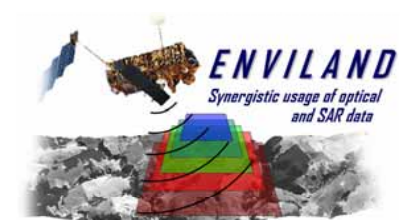
Bonn is well known as the birthplace of Ludwig van Beethoven. Numerous high-ranking museums invite you to enjoy the vivid cultural life of the city.

Built on Roman foundations, **the „Universitätsclub Bonn“** is located in the city centre (Konviktstr.9), close to the main university building, the railway station and the river Rhine. The workshop location can easily be reached by public transport and from Cologne/Bonn airport, which is also regularly approached by many budget airlines throughout Europe.



Workshop location: **Universitätsclub**

# Supported by



DLR/BMWi FKZ 50EE0846

Cover image:

- TerraSAR-X scene of Bonn, © DLR, 2008
- Land use classification of the Cologne region

Venue: Aerial photograph © Bundesstadt Bonn, 2007